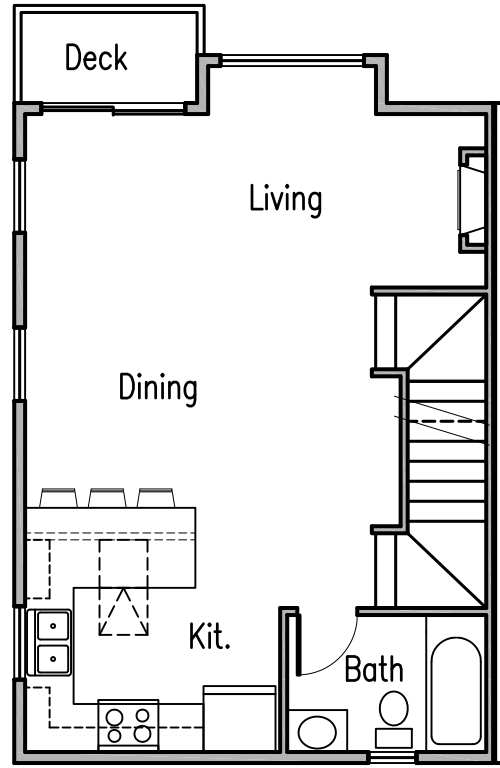
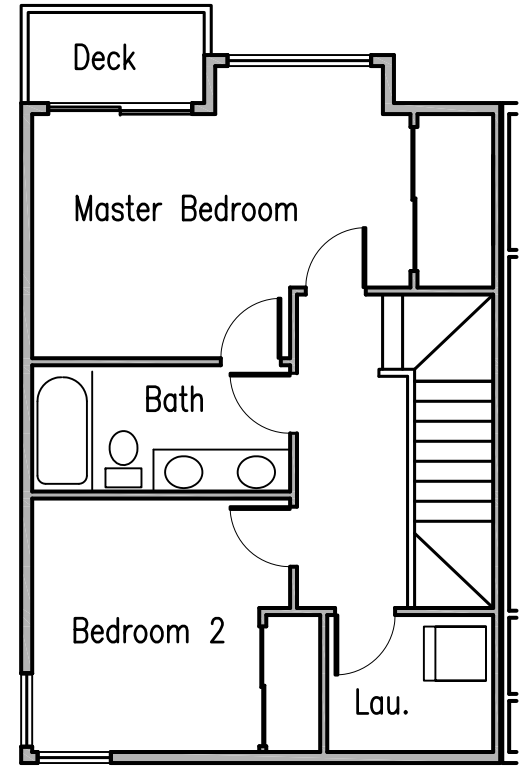


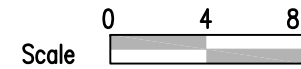
FIRST FLOOR PLAN



SECOND FLOOR PLAN



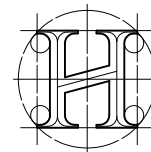
THIRD FLOOR PLAN



31st Ave NE Town Homes

12014 31st Ave NE, Seattle

Unit 1A

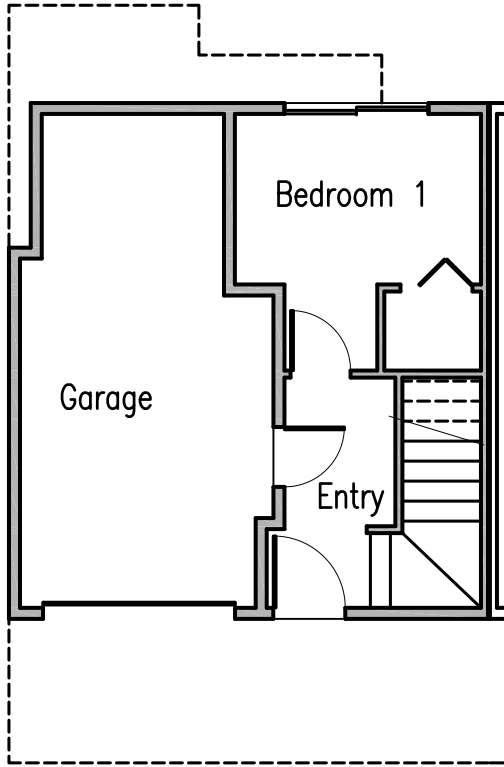


Howland Homes LLC

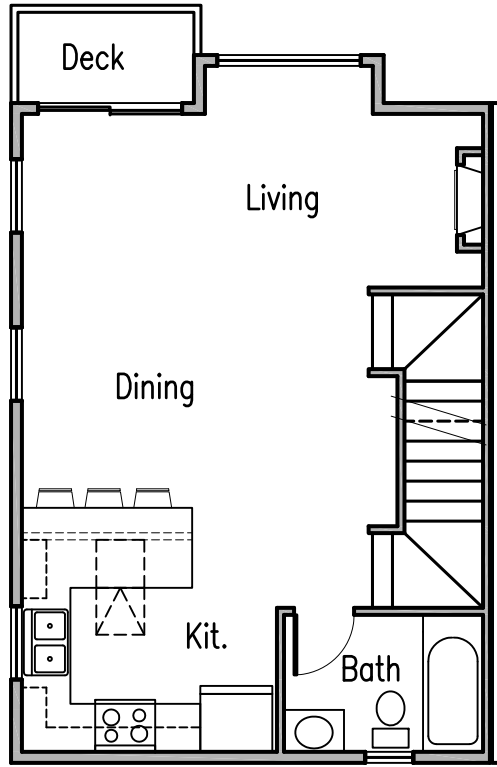
19237 Aurora Avenue North

Shoreline WA 98133-3930

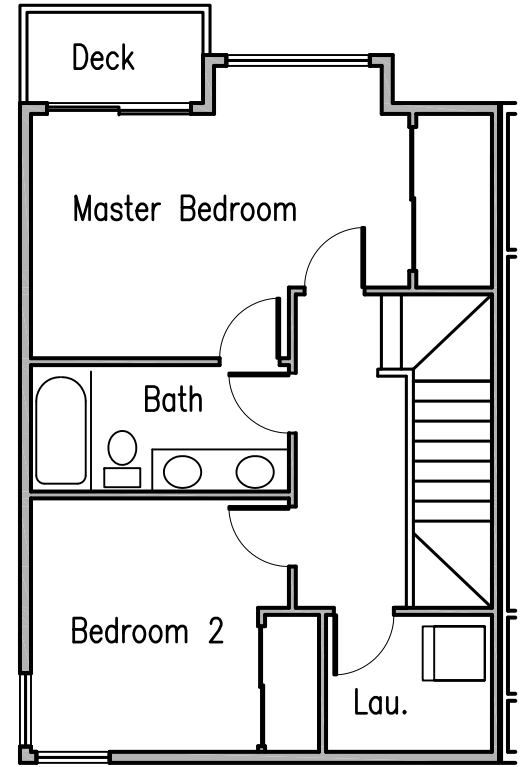
Ph: 206-542-9096



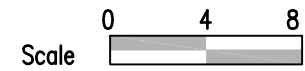
FIRST FLOOR PLAN



SECOND FLOOR PLAN



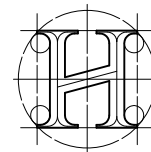
THIRD FLOOR PLAN



31st Ave NE Town Homes

12014 31st Ave NE, Seattle

Unit 1B

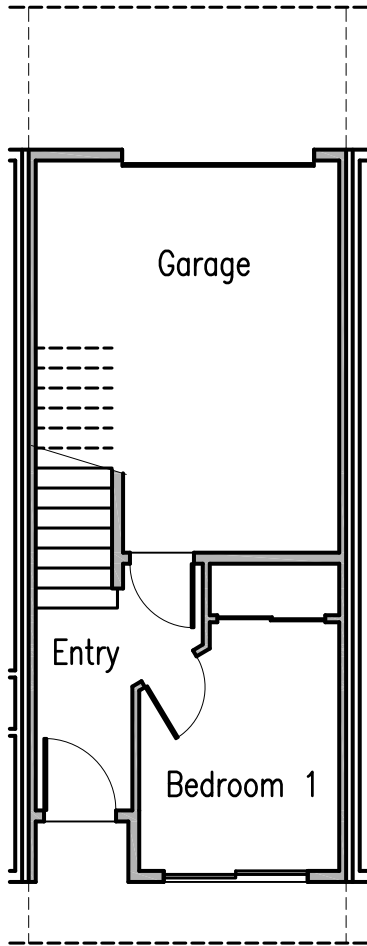


Howland Homes LLC

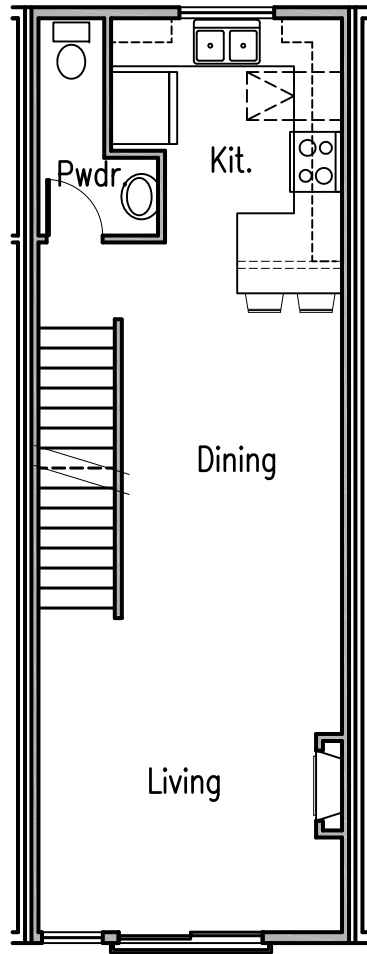
19237 Aurora Avenue North

Shoreline WA 98133-3930

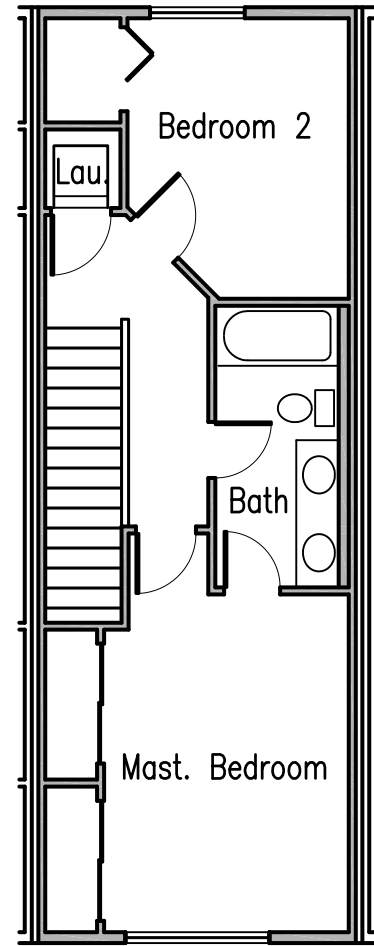
Ph: 206-542-9096



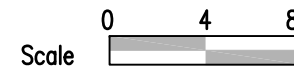
FIRST FLOOR PLAN



SECOND FLOOR PLAN



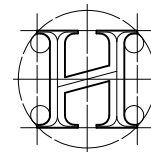
THIRD FLOOR PLAN



31st Ave NE Town Homes

12014 31st Ave NE, Seattle

Unit 2B

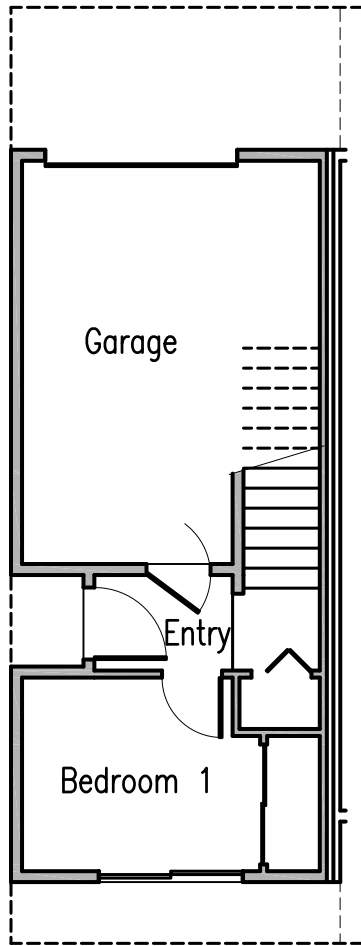


Howland Homes LLC

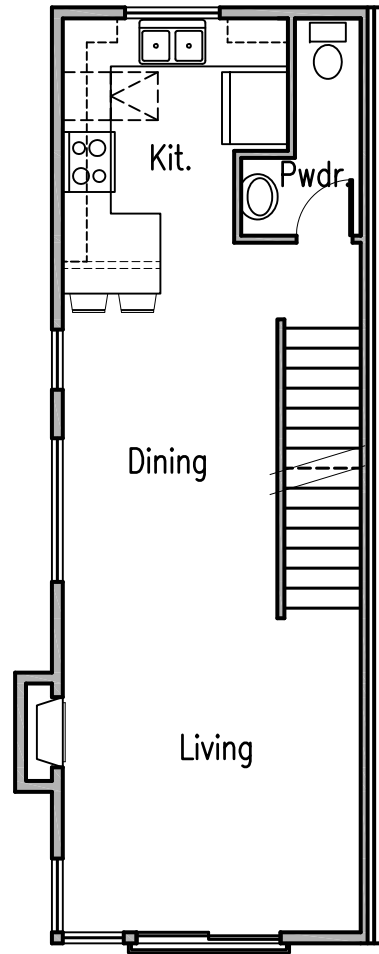
19237 Aurora Avenue North

Shoreline WA 98133-3930

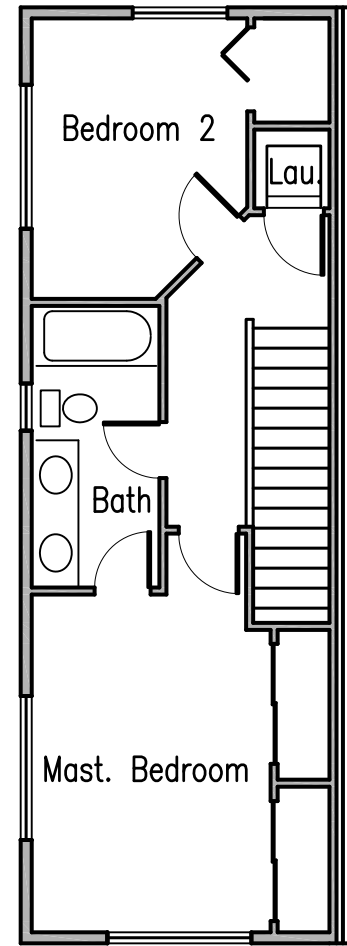
Ph: 206-542-9096



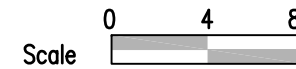
FIRST FLOOR PLAN



SECOND FLOOR PLAN

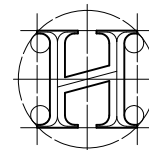


THIRD FLOOR PLAN



31st Ave NE Town Homes

12014 31st Ave NE, Seattle
Unit 2C (unit 2A mirrored)



Howland Homes LLC

19237 Aurora Avenue North
Shoreline WA 98133-3930

Ph: 206-542-9096